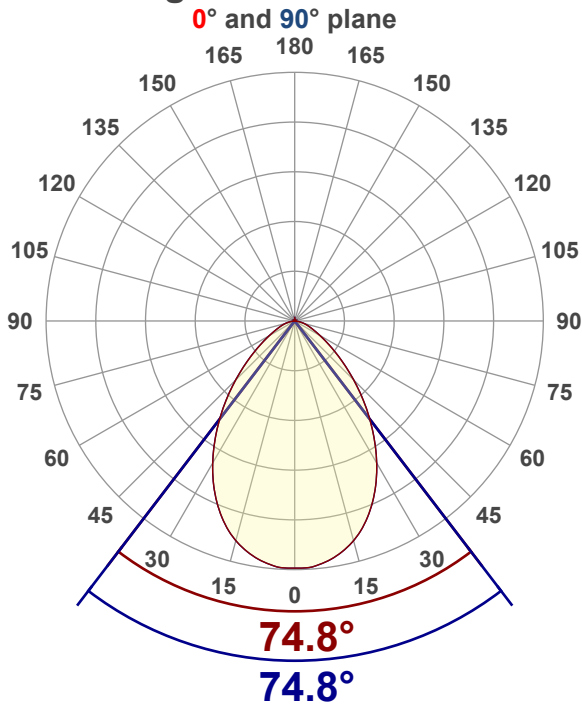


Light efficiency:**97 Lumen/Watt****Color temperature:****4991 K****Light quality:****CRI:94.2, R_g:91.0, R_f:99.7****P: 2 / V: - / F: 2****Output: 1060 lm****Peak: 663 cd****Power: 11.0 W****Voltage: 120 V****Current: 0.093 A****PF: 0.98****THD: 8.2 %****Angular Distribution****Product name:****SLMB4-12W-CCT-XX - 5000K****Test Date:****11/21/2025****Beam Angle (50% of the brightness of the centre):****74.8°****Field Angle (10% of the brightness of the centre):****124.7°****Cut Off Angle (2.5% of the brightness of the centre):****157.3°****Beam Details*****measured at centre of beam**

Mounting Height (feet)\(meter)	Lux*	Footcandles*	Beam width (feet) / (meter)
4 ft / 1.2 m	446 lx	41 fc	6.1 ft / 1.9 m
8 ft / 2.4 m	112 lx	10 fc	12.2 ft / 3.7 m
12 ft / 3.7 m	50 lx	5 fc	18.3 ft / 5.6 m
16 ft / 4.9 m	28 lx	3 fc	24.5 ft / 7.5 m
20 ft / 6.1 m	18 lx	2 fc	30.6 ft / 9.3 m

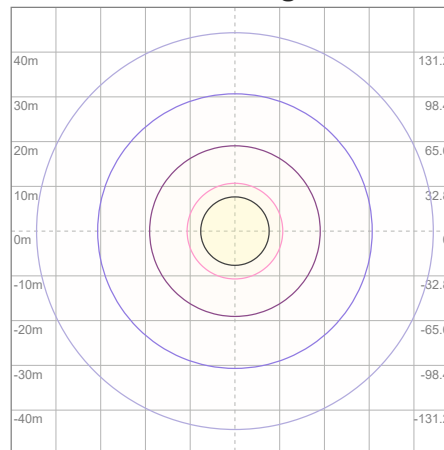
Beam center

Photometric Testing Report

Zonal Lumen Summary

Zone	Lumen	%Luminaire
0-30	466	43.96%
0-40	695	65.57%
0-60	972	91.70%
60-90	87.4	8.25%
70-100	32.6	3.08%
90-120	0.205	0.02%
0-90	1059	99.91%
90-180	0.667	0.06%
0-180	1060	100.00%

ISO Lux Diagram



Lux at center:	71 lx
3%	2.13 lx
5%	3.55 lx
10%	7.10 lx
30%	21.30 lx
50%	35.50 lx

Conditions:

Number of planes: 8

Lux distribution on a surface when lamp is mounted at 3.05 meters from the surface.

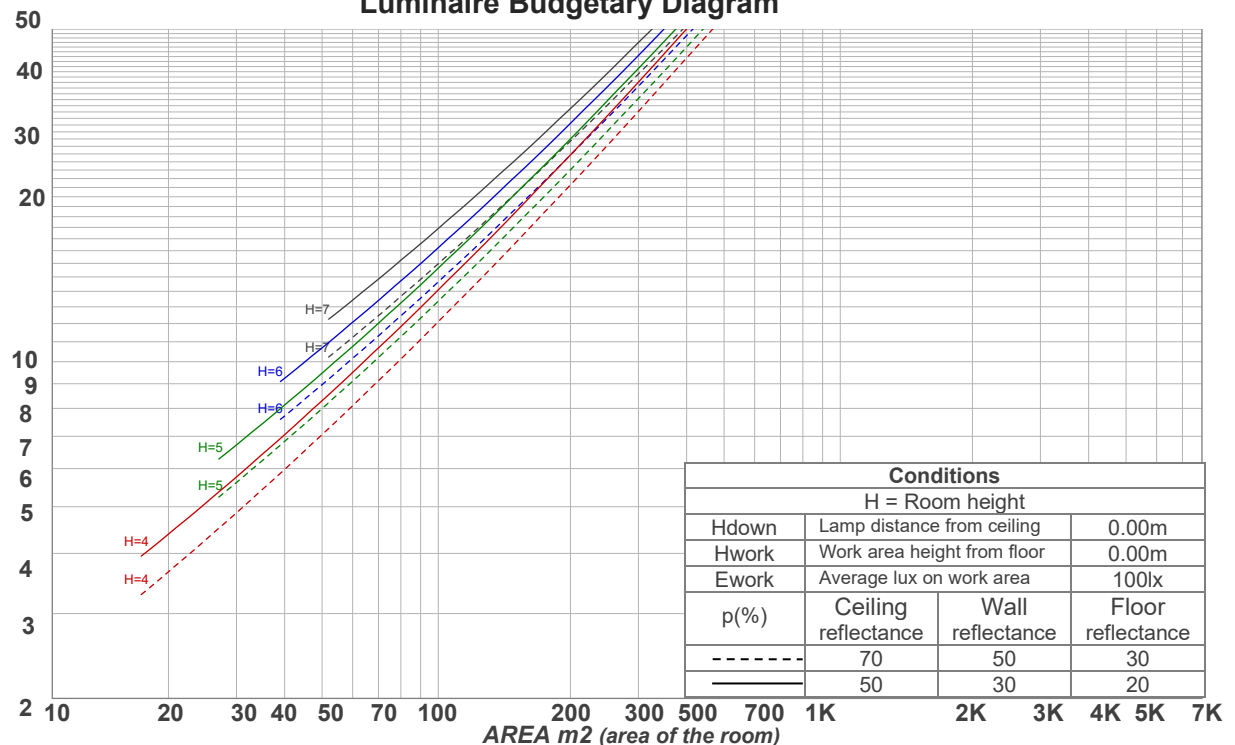
Mounting height: 3.05 meters (10 feet)

Coefficients of Utilization

Ceiling reflectance	80				70				50			30			10			0
Wall reflectance	70	50	30	10	70	50	30	10	50	30	10	50	30	10	50	30	10	0
Floor reflectance	20	20	20	20	20	20	20	20	20	20	20	20	20	20	20	20	20	0
RCR	(RCR: Room Cavity Ratio) Room Values are expressed as percentage of Lumens delivered to the task surface																	
0	119	119	119	119	116	116	116	116	111	111	111	106	106	106	102	102	102	100
1	111	108	104	101	109	105	102	100	101	99	97	97	95	94	94	92	91	89
2	103	97	91	87	101	95	90	86	92	88	84	89	85	82	86	83	80	78
3	96	88	81	76	94	86	80	75	83	78	74	81	76	73	78	75	71	69
4	89	80	72	67	87	78	72	66	76	70	65	74	69	65	72	67	64	62
5	83	73	65	59	81	72	64	59	70	63	59	68	62	58	66	61	57	56
6	78	67	59	53	76	66	58	53	64	58	53	62	57	52	61	56	52	50
7	73	61	54	48	71	60	53	48	59	53	48	58	52	48	56	51	47	46
8	68	57	49	44	67	56	49	44	55	48	44	54	48	44	53	47	43	42
9	64	53	45	40	63	52	45	40	51	45	40	50	44	40	49	44	40	38
10	61	49	42	37	60	49	42	37	48	41	37	47	41	37	46	41	37	35

LAMPS (number of lamps)

Luminaire Budgetary Diagram



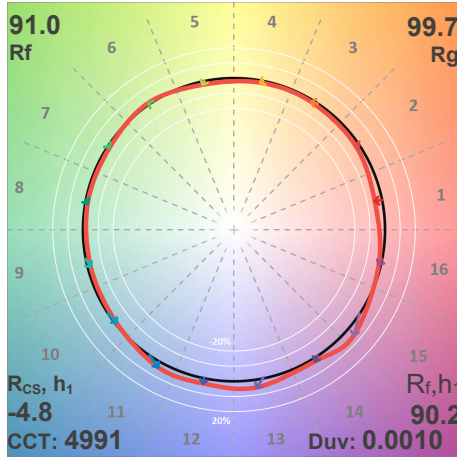
Conditions

H = Room height

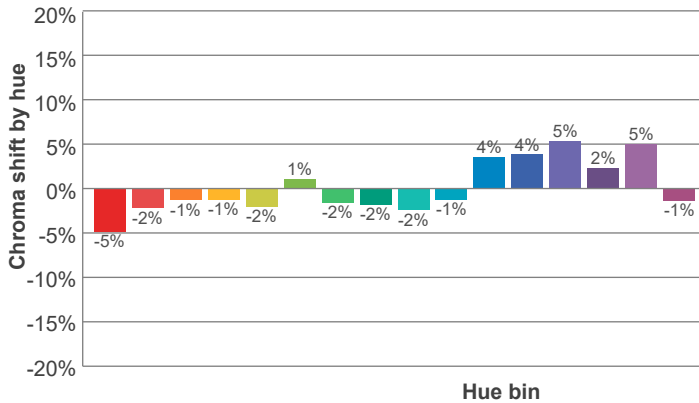
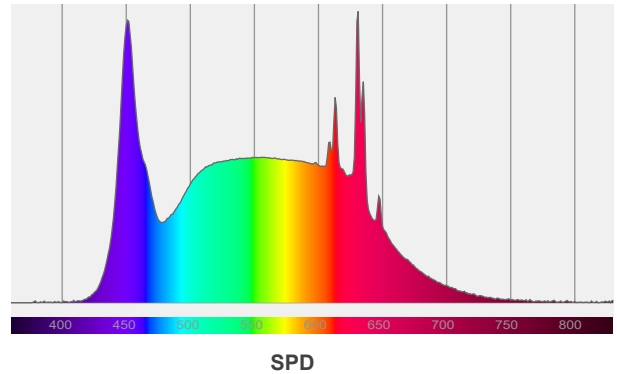
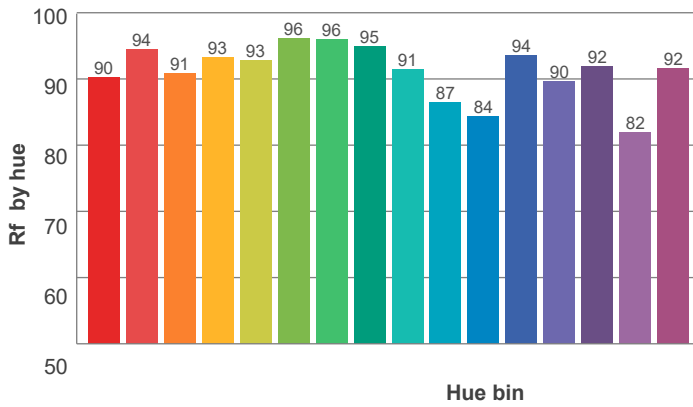
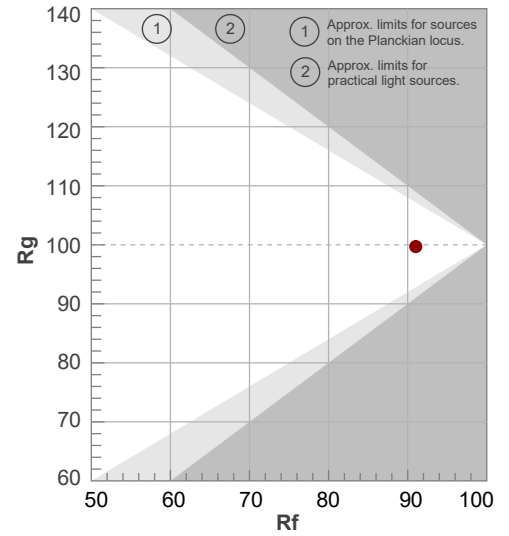
Hdown	Lamp distance from ceiling		0.00m
Hwork	Work area height from floor		0.00m
Ework	Average lux on work area		100lx
p(%)	Ceiling reflectance	Wall reflectance	Floor reflectance
-----	70	50	30
=====	50	30	20

ANSI/IES TM-30-18

P: 2 / V: - / F: 2



Hue Bin	R _f	Shifts (%)	
		Chroma	Hue
1	90	-5%	0%
2	94	-2%	2%
3	91	-1%	4%
4	93	-1%	2%
5	93	-2%	1%
6	96	1%	1%
7	96	-2%	1%
8	95	-2%	2%
9	91	-2%	6%
10	87	-1%	8%
11	84	4%	9%
12	94	4%	0%
13	90	5%	-6%
14	92	2%	-4%
15	82	5%	-14%
16	92	-1%	-4%



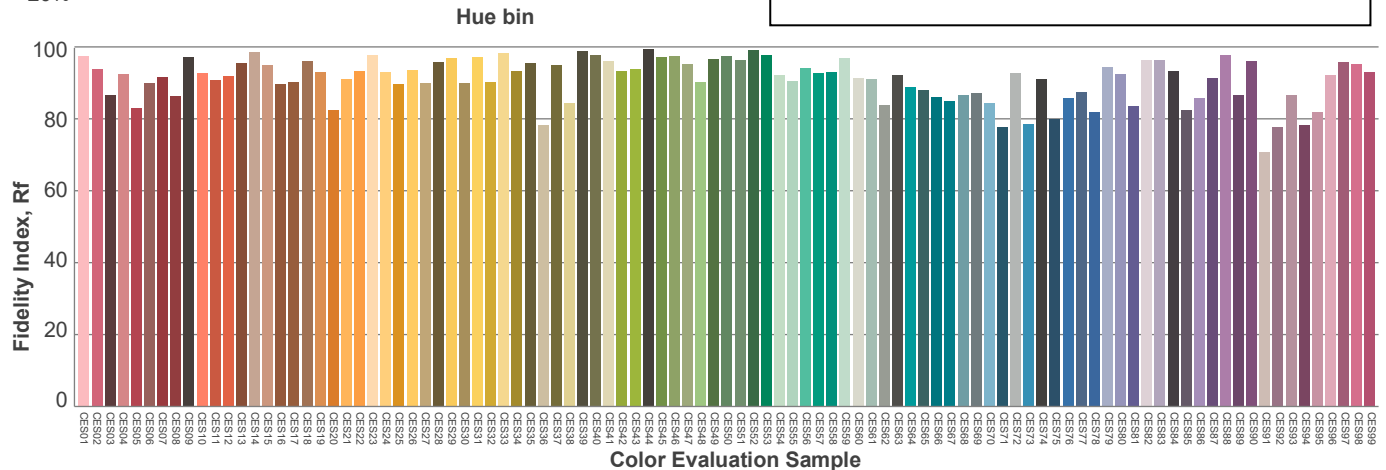
Red: 20.2%, Power=3.2mW

Blue: 18.8%, Power=11.0mW

Green: 32.3%, Power=15.0mW

UVA: 0%, Power=0.0mW

Dominant Wavelength: 580nm

1st Peak Wavelength: 631nm2nd Peak Wavelength: 451nm

Glare Evaluation According to UGR

p Ceiling		70	70	50	50	30	70	70	50	50	30
p Walls		50	30	50	30	30	50	30	50	30	30
p Floor		20	20	20	20	20	20	20	20	20	20
Room size X Y		Viewing direction at right angles to lamp axis					Viewing direction parallel to lamp axis				
2H	2H	25.0	25.9	25.1	26.2	26.4	25.0	25.9	25.1	26.2	26.4
	3H	25.4	26.4	25.8	26.7	26.8	25.4	26.4	25.8	26.7	26.8
	4H	25.6	26.6	26.0	26.8	27.1	25.6	26.6	26.0	26.8	27.1
	6H	25.8	26.7	26.1	26.9	27.3	25.8	26.7	26.1	26.9	27.3
	8H	25.8	26.6	26.2	27.0	27.4	25.8	26.6	26.2	27.0	27.4
	12H	25.8	26.6	26.2	26.9	27.4	25.8	26.6	26.2	26.9	27.4
4H	2H	25.1	26.1	25.5	26.3	26.6	25.1	26.1	25.5	26.3	26.6
	3H	25.8	26.6	26.2	27.0	27.4	25.8	26.6	26.2	27.0	27.4
	4H	26.1	26.8	26.5	27.2	27.8	26.1	26.8	26.5	27.2	27.8
	6H	26.3	27.0	26.8	27.4	27.7	26.3	27.0	26.8	27.4	27.7
	8H	26.4	27.0	26.9	27.4	27.7	26.4	27.0	26.9	27.4	27.7
	12H	26.4	26.9	26.9	27.3	27.8	26.4	26.9	26.9	27.3	27.8
8H	4H	26.2	26.8	26.7	27.2	27.6	26.2	26.8	26.7	27.2	27.6
	6H	26.5	27.0	27.0	27.4	28.0	26.5	27.0	27.0	27.4	28.0
	8H	26.6	27.0	27.1	27.5	28.2	26.6	27.0	27.1	27.5	28.2
	12H	26.7	27.0	27.2	27.5	28.1	26.7	27.0	27.2	27.5	28.1
12H	4H	26.2	26.7	26.7	27.1	27.6	26.2	26.7	26.7	27.1	27.6
	6H	26.5	26.9	27.1	27.5	28.1	26.5	26.9	27.1	27.5	28.1
	8H	26.6	27.0	27.2	27.5	28.1	26.6	27.0	27.2	27.5	28.1
Variation of the observer position for the luminaire distance S											
S = 1.0H		0.3 / -0.6					0.3 / -0.6				
S = 1.5H		1.1 / -1.3					1.1 / -1.3				
S = 2.0H		2.1 / -2.0					2.1 / -2.0				
Standard table		n/a					n/a				
Correction summand		n/a					n/a				
Corrected glare indices referring to 1060 lm total luminous flux											